

Slow Rot...or Not!

By Jennifer Goldstein

Subject Area: Science

Grade level: 5th

Rationale: In this lesson, students will discover how various environmental conditions affect materials that easily decompose, and how that relates to artifact preservation, such as ancient sandals made of plant fibers. They will formulate and directly investigate their own preservation theories by observing how grapes decompose in five different environmental settings. They will hypothesize how particular environments will affect their “artifact,” record observations of the grapes’ changing properties over a ten-day period and, finally, form conclusions based on their research.

Materials: Picture of ancient sandal for overhead projection (included); grapes (enough for each child to have 4 or 5); four clear plastic cups; several ziplock sandwich bags; two small lamps; access to a freezer; spray bottle filled with fresh water; salt water in a container; Observation Table handout (one per student).

Objectives:

Students will:

- Recognize differences in various environments and environmental conditions
- Observe and record an artifact’s properties
- Hypothesize how various environments will affect their artifact
- Draw and record changes over a 10-day observation period
- Collaborate with small groups to formulate ideas and conclusions
- Share their conclusions with the class

Texas Essential Knowledge and Skills (TEKS):

Science 5th Grade

- 112.7 Scientific Processes 2A plan and implement descriptive and simple experimental investigations including asking well-defined questions, formulating testable hypotheses, and selecting and using equipment and technology
- 112.7 Scientific Processes 2B Collect information by observing and measuring
- 112.7 Scientific Processes 2C Analyze and interpret information to construct reasonable explanations from direct and indirect evidence
- 112.7 Scientific Processes 112.7 Scientific Processes 2D Communicate valid conclusions

- 112.7 Scientific Processes 2E Construct simple graphs, tables, maps, and charts using tools including computers to organize, examine, and evaluate information

Activity:

Step 1- Display the picture of the ancient sandal on an overhead projector. Explain that ancient people made these sandals more than 1,000 years ago out of plant leaves, such as yucca and agave. Discuss how they could have survived so long. What kinds of environment might have preserved them?

(Examples: beach; dry cave; jungle; river bank; arctic; desert; ocean, etc)

Note: this sandal was found by archeologists in a dry cave in the Chihuahuan desert in the Texas Trans-Pecos region near El Paso.

Step 2- Divide class into 5 groups. Pass out Observation Tables and small bunches of grapes to each group. Groups observe the grapes and fill in descriptions under Day 1 on the Observation Table.

Step 3- Assign one of five environments to each group. Students discuss the probable conditions they would expect in the environment assigned and then form a hypothesis about how well the grapes will be preserved (Students will record on Observation Table.).

- Arctic (frozen)
- Desert (hot, dry, bright)
- Dry Cave (dry, dark)
- Jungle (hot, humid)
- Ocean (submerged in salt water)

Step 4- Group instructions for simulating five environments:

Arctic: Place grapes in a plastic cup and then freeze them (this can be done in a freezer at school or each students can freeze rtheir own at home and self-monitor through the course of the observation period).

Desert: Place the grapes in a plastic cup under a hot lamp in the classroom

Dry Cave: Place the grapes in a plastic cup in a dark protected place in the classroom, like a closet shelf.

Jungle: Spray the grapes (stored in a zip-lock bag—this increases humidity) with fresh water several times a day and place the bag under a hot lamp. The bag can also be placed outside if there is enough heat and humidity.

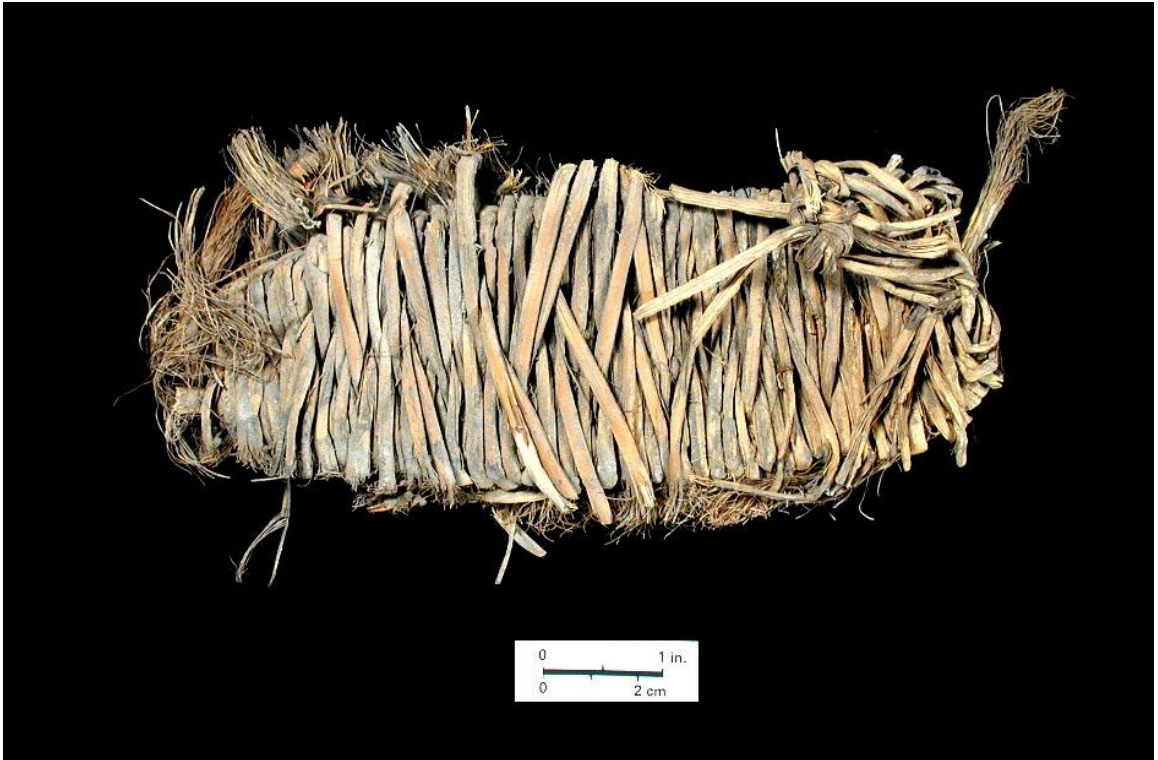
Ocean: Submerge the grapes by placing a rock or brick on top of the grapes in a container of salt water (1/4 salt cup per gallon of water). Cup with grapes should be full of water. [An extension for the group is to place a penny in the water. Compare what happens to the metal compared to the grapes.]

Step 5- Over the next 10 days, groups monitor the grapes and record changes periodically on Days 1, 5, and 10. They will need to both write and draw their observations. All students will observe and record.

Closure- Which environment best preserved the grapes? The dry cave closely matches the environment where the ancient sandal was found. Why would a dry cave preserve yucca leaf sandals better than it did the grapes? After completing the 10 days of observation, each group shares their original hypothesis and their final conclusions with the class.

Extension: Have the class explore the interactive “The Case of the Ancient Sandals” with Dr. Dirt, the Armadillo Archeologist www.TexasBeyondHistory.net/kids/sandals to learn more about ancient sandals of west Texas and how they were made.

Ancient Sandal Made of Plant Fibers



Observation Table: Material Decomposition

Name: _____

Environment: _____

Hypothesis: _____

Illustration				
Size				
Color				
Texture				
Smell				

Conclusions: _____
